



Prof. Sally Holland
Children's Commissioner for Wales

How a commitment to children's human rights can support children to thrive as we recover from the pandemic

Sally Holland

Comisiynydd Plant Cymru

Children's Commissioner
for Wales



Comisiynydd
Plant Cymru
Children's
Commissioner
for Wales

FIVE FUNCTIONS OF OUR OFFICE

SUPPORT

LISTEN

ADVISE

INFLUENCE

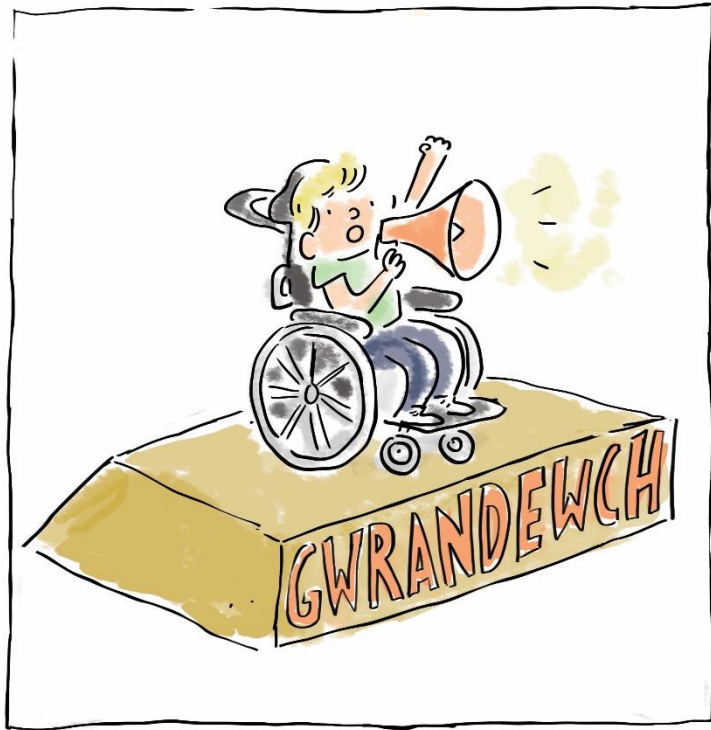
SPEAK UP



Coronavirus – our response

- Provide trustworthy and accessible information
- Ensure children and young people's experiences and views influence policy decisions
- Scrutinise and support Government & public services' responses
- Protect children likely to need more support: incl. closed settings, children living away from home, disabled children



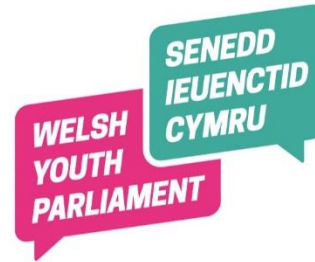


Coronavirus and me 2:

a nationwide survey for children and young people

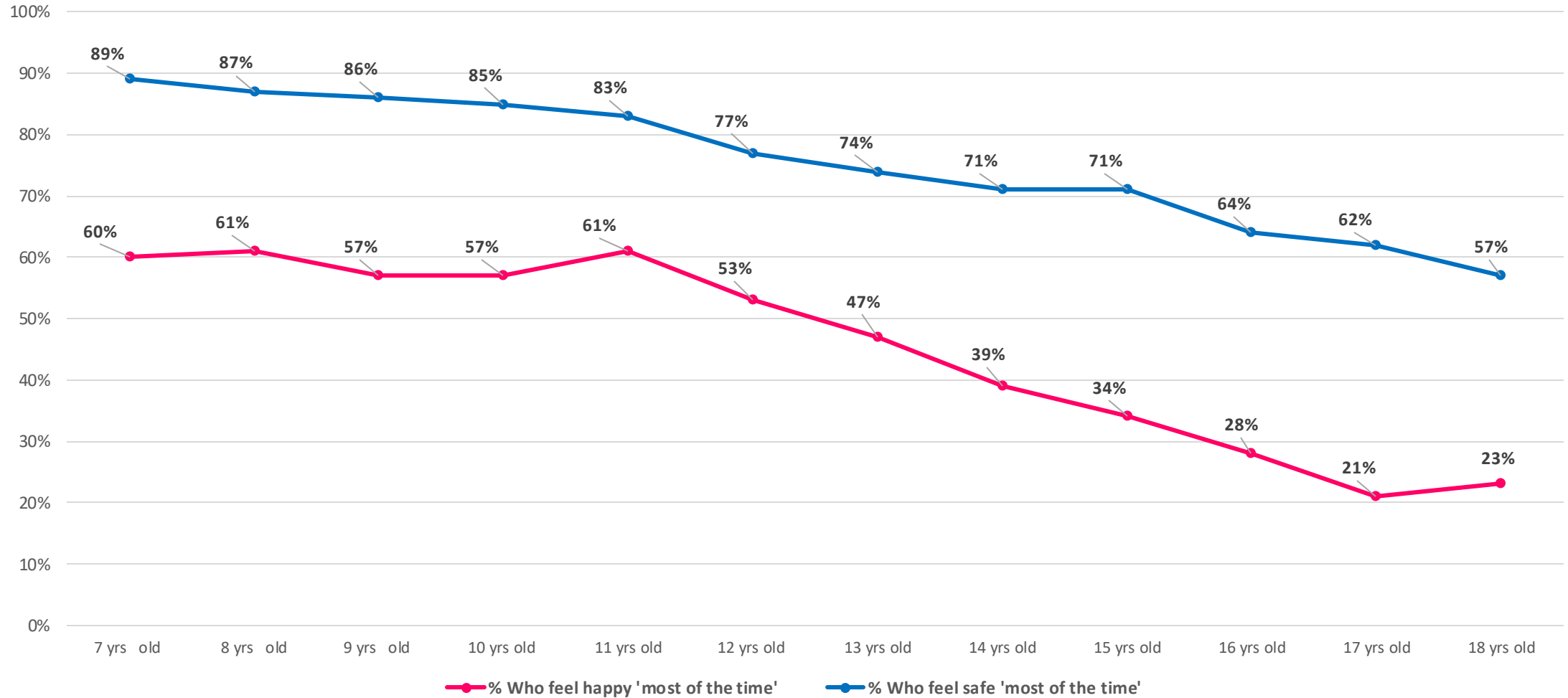


Llywodraeth Cymru
Welsh Government



Comisiynydd
Plant Cymru
Children's
Commissioner
for Wales

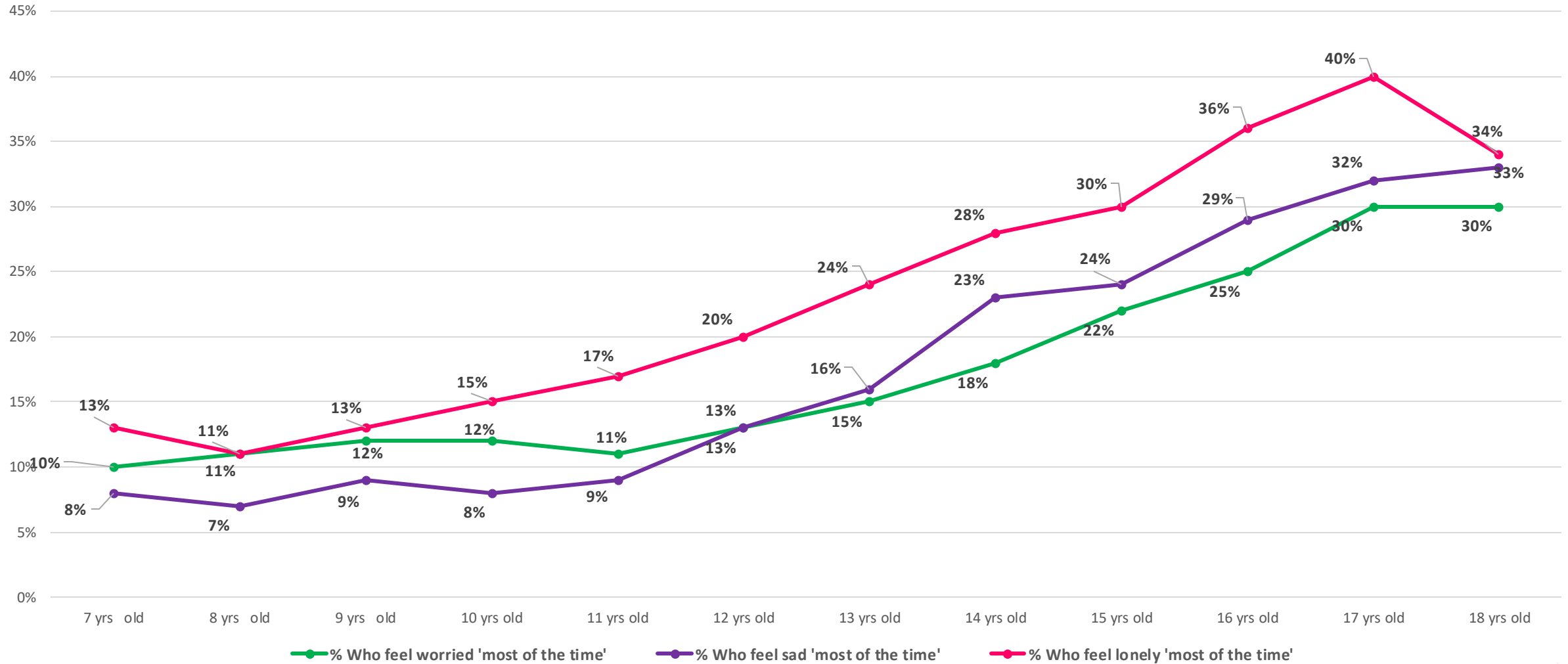
Graph 1: the percentage of young people who feel happy and safe 'most of the time'



@complantcymru
@childcomwales

comisiynyddplant.cymru
childrenscommissioner.wales

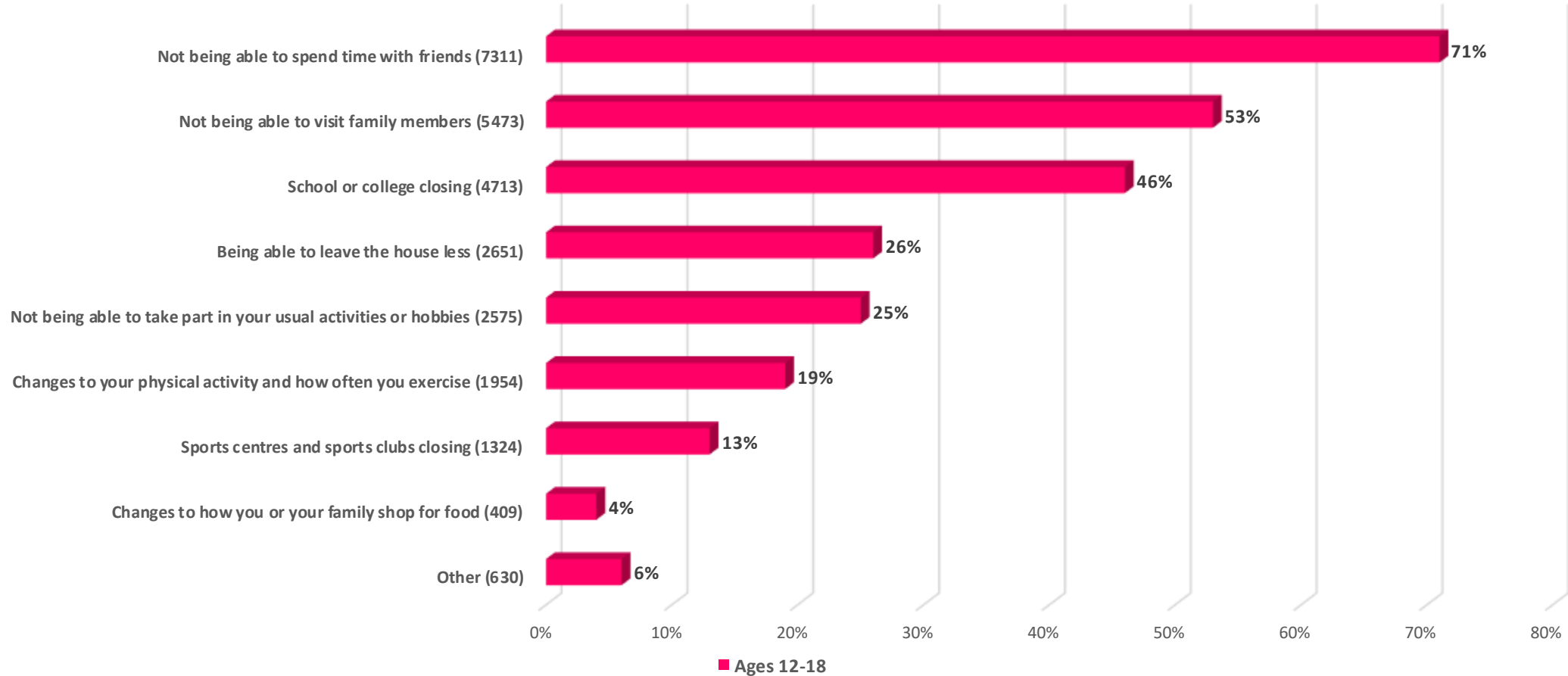
Graph 2: the percentage of young people who feel worried, sad and lonely 'most of the time'



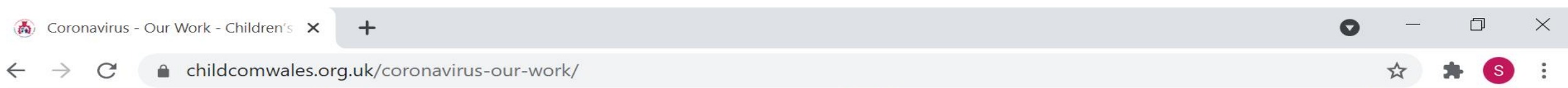
@complantcymru
@childcomwales

comisiynyddplant.cymru
childrenscommissioner.wales

Staying at home because of the coronavirus has changed our lives in lots of ways. Which changes have had the MOST impact on how you feel? (ages 12-18)
Choose up to three: (presented here in descending order)



Coronavirus and Me surveys in May 2020 and January 2021 highlighted social inequalities



Experiences of children from BAME backgrounds

1,496 children and young people who did our Coronavirus and Me



Experiences of young people aged 15-18

4,417 young people aged 15-18 did our Coronavirus and Me survey. These are some of their experiences



Experiences of disabled children

These are the views of disabled children who did the Coronavirus and Me survey.

What next?

Covid 19 recovery:

- Reassurance to children and young people –avoiding ‘lost generation’ messaging while maximising investment
- Concentrate on inequalities highlighted by pandemic
- Build on what we’ve learned: cross-agency working, innovative ways of delivering services, re-organising work to maximise family time, greater redistribution of resources
- Put children’s human rights at the centre



No wrong door



“Young people should be at the centre of all support services and there should be no barriers in place to prevent young people from receiving the support that they need and deserve”

“Help should come to you; you don’t keep coming to them”

“You should be able to go to them and they help you. You shouldn’t be sent away to find all the different services yourself”

No Wrong Door: bringing services together to meet children’s needs



Comisiynydd Plant Cymru
Children's Commissioner for Wales





Comisiynydd
Plant Cymru
Children's
Commissioner
for Wales

The Right Way

Embedding the UNCRC

Equality and non-discrimination

Empowering children

Participation

Accountability



Manylion Cyswilt | Contact Details

Trydar | Twitter

@childcomwales

Instagram

@childcomwales

Awr Hawliau | Rights Hour

Dydd Gwener | Friday 12- 1

Ffôn | Phone

01792 765600

Ebost | Email

post@childcomwales.org.uk | post@complantcymru.org.uk

Facebook

<https://www.facebook.com/childcomwales/>

Gwefan | Website

www.childcomwales.org.uk | www.complantcymru.org.uk



Comisiynydd
Plant Cymru
Children's
Commissioner
for Wales