

Health and Environment

Paul Fisher, Consultant in Health Protection, UK Health Security Agency

Sophie Morris, HDRC Project Manager, Sandwell Council

Welcome!



Who are you?



Name, organisation, and let us know how the environment has impacted your mental or physical health and wellbeing!

Environment and Health

- The environmental impact on health is well documented and understood in research, but the complex nature of the interactions between the environment and health mean it is a **cross-silo systemic issue**
- No one department or organisation can work in isolation to tackle the issue

Where cross-sector work is being done in these areas in the West Midlands

Case studies: Local Government, universities, national organisations, charities and more

Climate Change

Case Studies

- WM- Net Zero
- UK Health Security Agency's Health Effects of Climate Change (HECC) report
- Net Zero Innovation Programme

WEST MIDLANDS NET ZERO

1:6 born outside UK
30% BASE
WEST MIDLANDS 2.9m people

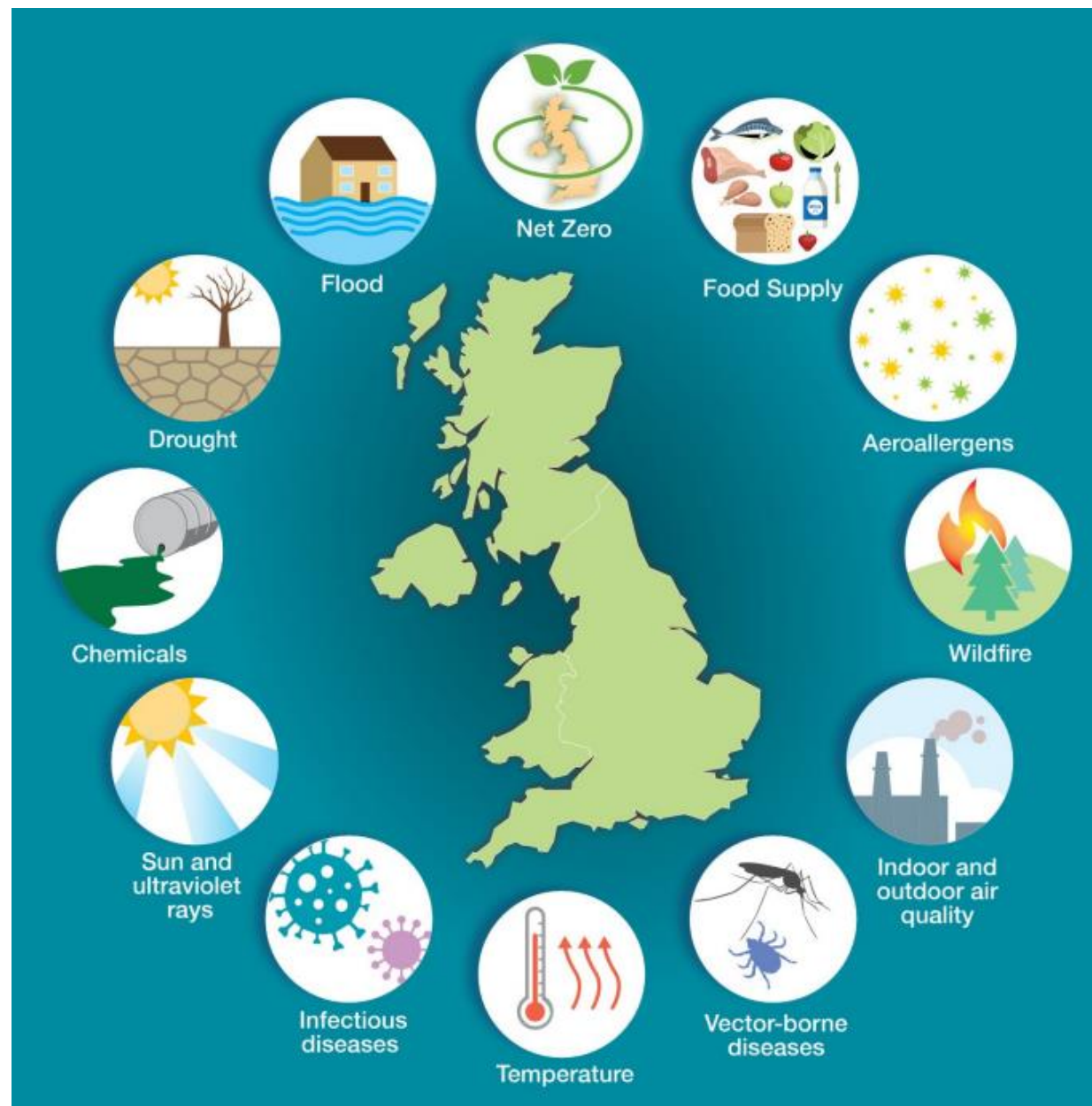
"Car city"
lower life expectancy than England average
Dr Suzanne Barlington



WM- Net Zero

- Led by the University of Birmingham and funded by the Wellcome Trust, and working jointly with 14 regional and national partners, WM-Net Zero will produce a toolkit that can estimate the health and economic impacts of net zero policies, using air pollution as a determinant of health.

UK HSA's HECC Report



Net Zero Innovation Programme (NZIP)

In 2020/21 Sandwell and University of Birmingham were successful for a bid for the LGA and UCL's NZIP grant

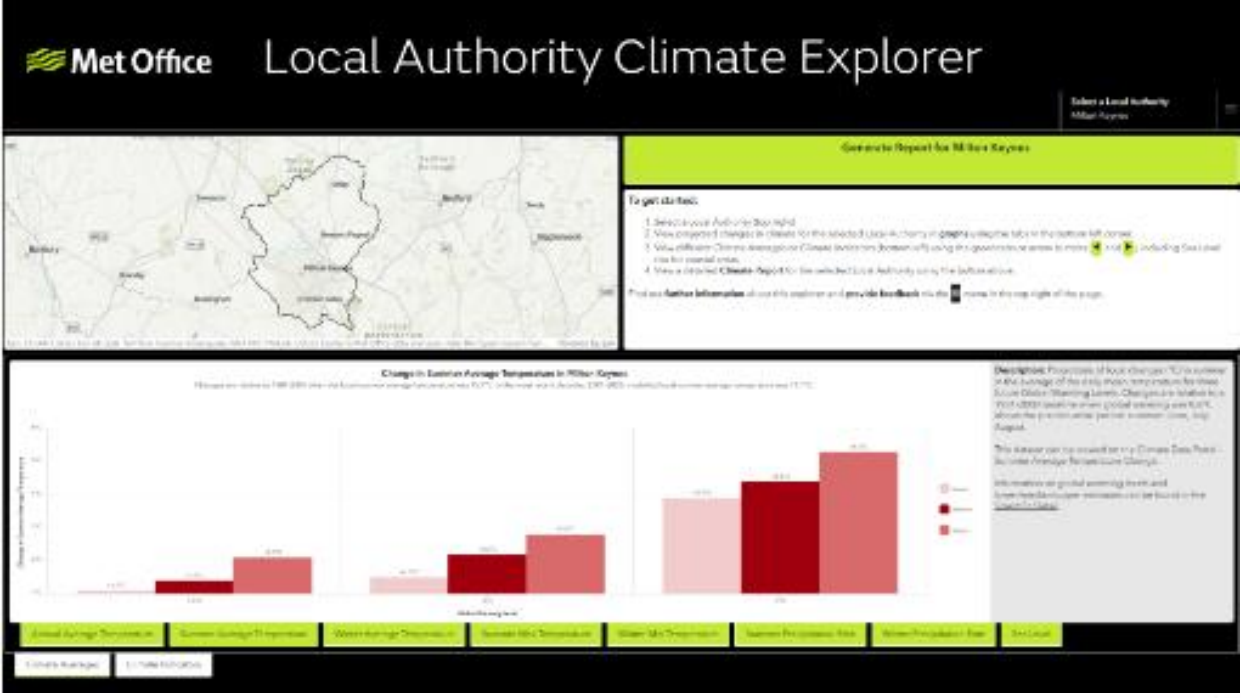
Sandwell implemented a training programme and grants for local community groups about climate change and health, with the novel inclusion of bespoke coaching for community grant recipients throughout the project

Coaching sessions were delivered to the successful grant recipients by Savills

UoB evaluated the project

Coaching was found to be received positively by participants and improve their grant experience

100% recommendation from participants to other community groups



<https://www.metoffice.gov.uk/about-us/news-and-media/media-centre/weather-and-climate-news/2024/met-office-launches-new-local-authority-climate-service>

Air Pollution

- Case Studies
 - WM-Air
 - WMCA Air Quality Framework
 - SMBC Smoke Control Area



WM-AIR

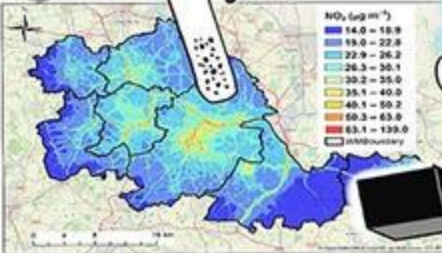
CLEAN AIR SCIENCE FOR THE WEST MIDLANDS



3 THEMES

1 UNDERSTANDING

air pollution challenges



2 CAPABILITY

to support clean air measures & policy

- MODELLING
- DATA
- TOOLS



telematics

3 APPLICATION

to specific policy scenarios



60 policy contributions

150 OUTPUTS

- OBSERVATIONS
- EMISSIONS
- MODELLING
- HEALTH
- ECONOMICS
- URBAN DESIGN & GREEN INFRASTRUCTURE

£4m NERC funding over £40m leveraged investments

40 impact case study partnerships

CROSS-SECTOR PARTNERS

20+ Network of over 300 people

TOOLS

Air Quality Lifecourse Assessment Tool



health & economic implications



- REDUCE
- EXTEND
- PROTECT



20 stakeholder events

ENGAGEMENT



WMCA Air Quality Framework

- Regional framework to address the trans-boundary nature of air pollution
 - Delivery and implementation plan co-designed with West Midlands local authorities and Transport for West Midlands, and the University of Birmingham, by ARUP, to accelerate local plans for improvement, launched in 2023
- Framework categories:
 - Domestic emissions and indoor air quality
 - Engagement and behaviour change
 - Transport
 - Natural and built environment
 - Commercial, industrial and agriculture
 - Public health
 - Planning, policy, governance and mechanisms for change
 - Monitoring and digital
 - Climate/net zero
- All options recommended in the framework underwent appraisal including health outcomes, including direct improvement to human health and reduced health inequalities



West Midlands
Combined Authority

Sandwell's Smoke Control Area

A Smoke Control Area (SCA) is agreed by the local council and is an area where you are not allowed to:

emit visible smoke from a chimney, including moored vessels such as canal boats

burn solid fuel, such as wood and coal, that is not [authorised](#), unless it is to be used in a [Defra exempt appliance](#).

The purpose of a Smoke Control Area is to reduce the amount of harmful smoke being released from chimneys, this is because smoke damages our local air quality and is harmful to everyone's health.

Sandwell widened their SCA to the whole of the borough in July 2024, after public consultation

Groups

- What are your priority areas?
- How do they differ from the rest of your group?

Rank these areas in order of importance to your service area

Water quality e.g. lead/pesticides/contaminants in water

Water quantity e.g. drought or floods

Indoor air pollution

Outdoor air pollution

Contaminated land e.g. hydrocarbons, heavy metals from industry

Temperature e.g. heatwaves, cold weather

Food e.g. prices, food security, supply chain issues

Vector borne diseases e.g. ticks, mosquitos

Natural capital e.g. green space, water bodies

Built environment e.g. urban heat island, shading, infrastructure

What regional best practice are you aware of?

Linking back to your ranking, start at the top and share an example

If there aren't any you can think of as a group for an area, why? What barriers are there for this?

Future

- Based on discussions today:
 - What work areas should there be funding for?
 - Are there areas for action?
 - Opportunities for collaboration?
 - Have you identified a gap in your system?
 - Are other things more of a priority than you thought? Or are they not when they should be?

Feedback

- Is there space for a cross-sector regional environmental and health group?
 - Who should be involved?
 - When should they meet?
 - What format should it take?
 - Sharing best practice tips? Successful projects?

Thank you!

Paul.Fisher@ukhsa.gov.uk

Sophie_Morris@sandwell.gov.uk