



NIHR HDRC Coventry Health Determinants Research Collaboration

Sue Frossell

Director of Coventry HDRC / Consultant in Public Health

18th January 2023



Early 2019 Chris Whitty and Anne Johnson - Visit to CCC

NIHR – Health Impacts of Wider Determinants

Birmingham University with University of Warwick – Research readiness and capability

Recommendations examples:

- Frontline employees in dedicated research roles
- Remove barriers in time and resource

Press Release 11th October 2022

One of 10 LAs - Oct 2022 start

Background

Funded HDRCs

- 61 local authorities applied in 2021
- 10 HDRCs funded (3 granted development funding)
- More to come!
- Successful bids:
 - Tower Hamlets Council; Newcastle City Council; Doncaster Council; Aberdeen City Council; City of Bradford Metropolitan District Council; Plymouth City Council; Gateshead Council; Blackpool Council; Coventry City Council; The London Borough of Lambeth
 - (Middlesbrough Council and Redcar & Cleveland Council; Medway Council; Islington Council)



Coventry's Context



Marmot City



HWB/ Place Forum



One Coventry Partnership



One Coventry Plan



Anchor Alliance



NHS Health Inequalities Plan



ANCHOR ALLIANCE MISSION

An anchor institution alliance for Coventry and Warwickshire with an individual and collective commitment to the delivery of transformative actions to; address the inequalities in our communities in health and wellbeing, access to education, employment opportunities; and to supporting the development of enterprise and the economy.

ICS 2/4

- Tackle inequalities in outcomes, experience and access.
- Help the NHS support broader social and economic developments.

HDRC programme overview

Aims:

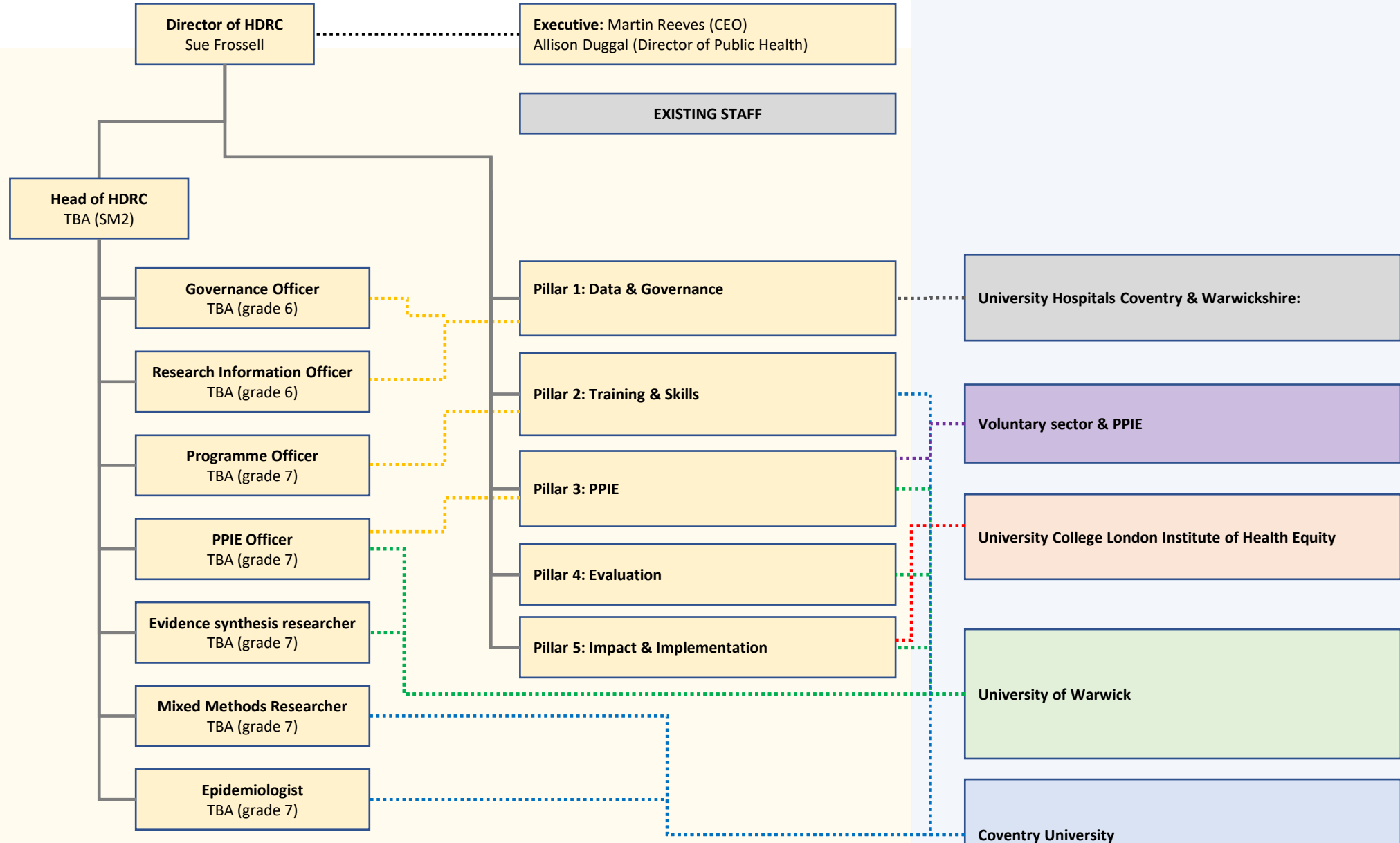
- Build research capacity between local government and universities.
- Enable local authorities to become more research-active & shape research agenda to inform the decisions and issues they face.
- Mobilise evidence to inform decision making.
- **Focus on addressing the wider determinants of health and health inequalities.**

Up to £5m for a five-year programme.

- Infrastructure and training only; there is no “research” funding.

Collaboration between local authority & universities and wider partners.

BIG focus: PPIE; Culture Change



Coventry HDRC partners

- Internal partners:
 - Community Resilience, Insight, Housing, Planning, Economic Development, Employment and Skills
- External partners:
 - Universities: Coventry, Warwick, UCL (& UHCW as core partner)
 - Wider system: Chamber of Commerce, DWP, ICS
 - Voluntary sector: Grapevine, Law Centre, Sky Blues, PYF, VAC
- Independent steering group (Sir Michael chair):
 - ADPH, Health Foundation, King's Fund, OHID

Coventry HDRC pillars

Pillar	Lead partner	Activities
Data & Governance	UHCW	<ul style="list-style-type: none">Establishing research ethics committee and data governance processes
Training & skills	Coventry University	<ul style="list-style-type: none">Annual half-day symposiumAccess to university masters modulesBilateral exchanges across wider system
Patient & Public Involvement and Engagement	University of Warwick	<ul style="list-style-type: none">Establishing pathways to inform prioritisation, design, delivery, and dissemination of research
Evaluation	University of Warwick	<ul style="list-style-type: none">Identifying the barriers and solutions to establishing HDRCsMentoring future HDRCs in set-up
Impact & Implementation	University College London & University of Warwick	<ul style="list-style-type: none">Culture change in local authority: tackling health inequalities & embedding evidence based decision makingDisseminating research internally, nationally (local authority network), internationally

Coventry HDRC learning points ...so far

- HDRC requires:
 - Clear leadership with substantial time commitment (40%)
 - Strong buy-in from senior leadership (board & CEO)
 - Senior manager to oversee programme
- Challenges that may be encountered
 - Aligning LA, HEI, VSCE priorities
 - Agreeing contracts (new processes for LA and NIHR)
 - Getting recruitment started ASAP
 - Financial agility needed as new needs identified



Any Questions?

Sue.Frossell@Coventry.gov.uk

