



SLI Snapshot



Issue: June 2022

The aim of the Snapshot is to provide a monthly Sector-Led Improvement (SLI) update to DsPH and their public health teams. The Snapshot is produced and managed by [Aimee Stimpson](#) and [Jodie Horton](#). If you have something that you would like included for the next issue, please get in touch.

1. SLI Workforce Development Event – Join the CPD Event

As a follow up to our first workforce development event in November 2021, there has been a team’s invite circulated to our second workshop: SLI Skills Event- PH Risk Tool Self-Assessment, What Good Looks Like & LGA Learning Exchange Functionality. The date of the second CPD event is the **19th of July 9am-11am**. If you have not received an invitation, please contact Jodie.Horton@southglos.gov.uk to arrange a forwarding of invitation, also, please feel free to share the event within your own teams.

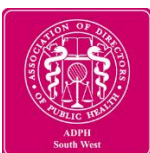


The event will consist of a presentation of the refreshed PH Risk Tool Self-Assessment with examples of its use and opportunity to share ideas of how the South West could implement the tool. There will also be a demonstration of the LGA Learning Exchange platform and its use in practice for shared learning. Finally, there will be time for the LGA to present their other offers of support available. We hope this session will engage attendees into the practical application of the tools displayed to them. If you have any questions on this event, please contact Jodie.Horton@southglos.gov.uk



3. SLI Shared Intelligence Report

The ADPH commissioned a Shared Intelligence report on the breadth and variety of Public Health SLI activity, with a particular focus on impact and reflections on progress made over the pandemic. To support the delivery of this report, SLI Leads Sara Blackmore and Aimee Stimpson and SLI Coordinator Jodie Horton provided input from the South West. This included details of the Suicide Prevention quality improvement work, facilitation of peer-peer learning through a health inequalities DsPH template and acknowledgment of self-assessments undertaken and upcoming in our 22/23 SLI action plan. If you have any reflections or suggestions, you would like to share for this report please contact Jodie.Horton@southglos.gov.uk.



4. OHID Deputy Chief Medical Jeanelle De Gruchy Visit- SW SLI Journey

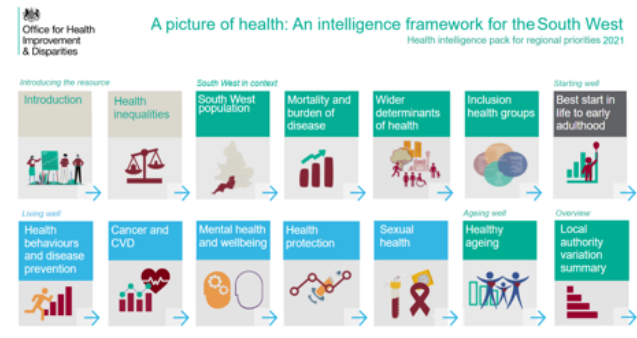
OHID's Deputy Chief Medical, Jeanelle De Gruchy visited the South West on Friday 17th June and met with partners from the South West, including Directors of Public Health.

As part of the day with OHID SW, the team were asked to present the SW SLI journey to Jeanelle to showcase our approach, values, and principles as well as highlighting some of our recent key SLI successes. This included our local SLI work on the Smoke Free Home Project being led by Becky Reynolds and our workforce CPD events. Our journey and ambition were well received by Jeanelle.

Thank you for all your support with our SLI programme in 21-22

Sector led improvement in the SW region

Developing aiming to be advanced/ transformational, Resetting post Covid pandemic, re-framing SLI from 'audit and quality' to improvement and embedding SLI across the Public Health workforce, balancing national and local SLI programmes



- SLI regionally identified programme "Health Visitor Smoke free Home"
- Surveillance and understanding of current practice across the SW, with a view to identifying examples of practice (to showcase), facilitators & barriers
 - Improving the flow of data (relating to smoking status and smoking cessation interventions) between Maternity and Health Visitor teams with a view to developing valuable feedback loops relating to relevant patients 'stop smoking journey'
 - Improving relapse prevention (during the Maternity Pathway but especially post-partum)
- Progress:
- Working group established,
 - Developing questionnaire for HV leads for benchmarking purposes and to identify opportunities for improvements across three strands

Actions and results



Content	Speaker(s)
Welcome	Sarah Scott, Director of Public Health for Gloucestershire
Setting the scene – Quality Improvement in public health, SLI methodology and principles	Jonathan McShane
Rest break	
Association of Directors of Public Health (ADPH) and SLI	Dr Rupert Suckling, DPH Doncaster, ADPH Membership Secretary and Chair of the ADPH SLI Programme Board
SW update on SLI	Sara Blackmore, Director of Public Health for South Gloucestershire
The role of the Local Government Association (LGA) in SLI	Kay Burkett and Caitlin Corley, LGA Care and Improvement Programme Team
Rest break	
Breakout rooms - sharing your local experiences of quality improvement and SLI	
SLI in practice - SW ADPH behavioural insights project	Sam Crowe, DPH Dorset and BCP and Matt Lenny, DPH North Somerset

6. SLI proposal - regional social marketing for PrEP

In January 2022 the HIV & Improving Access to PrEP subgroup from the Southwest Sexual Health Network a scoping report to inform a wider regional PrEP programme to improve access to HIV PrEP for underserved populations. The scoping phase of this project has now been completed and the project scoping report is currently being finalised.

The report has included results from a regional online survey to understand the barriers that people from different groups have in accessing PrEP via Sexual Health services across the Southwest. The online survey received more than 750 responses across all LA areas. The report will inform our next steps to improve how we can work collaboratively to target underserved populations more effectively to improve access HIV PrEP across the Southwest. For more information contact Rob Carroll (r.carroll@swindon.gov.uk).



What's next?



Thank you