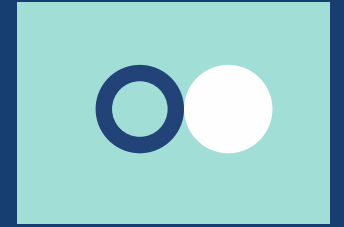
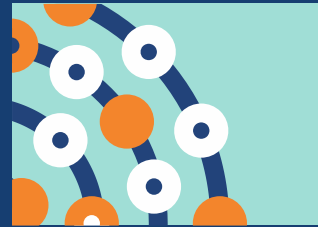
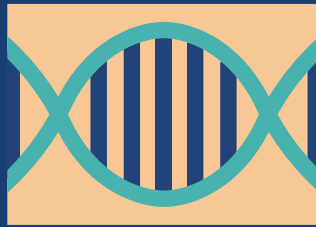
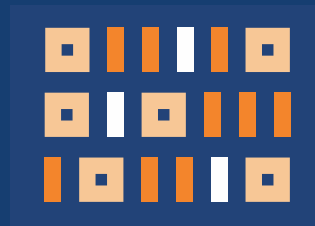
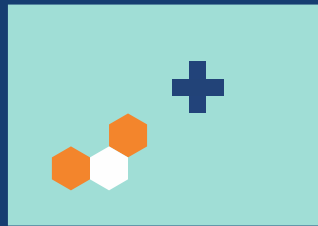
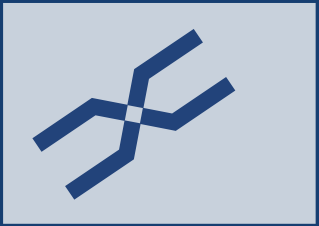


NIHR

Health Determinants
Research Collaboration
Gateshead



Evaluating Warm Spaces in Gateshead: Insights, challenges and Future Directions

Dr Michael Johansen
Dr Kate Haddow
Dr Olivia Mullaney

Research Portfolio Leads | Gateshead HDRC
Research Associate | Population Health Sciences Institute |
Newcastle University

Aim:

To expand knowledge of the Warm Spaces initiative to address poverty

Objectives

- Outline the current situation associated with health inequalities and poverty
- Outline the insights, challenges and future directions of Warm Spaces initiative
- Design actional insights to drive change in own communities around Warm Spaces initiatives.



You need to choose whether to eat or stay warm. Which do you choose?

① Start presenting to display the poll results on this slide.

21%

of the UK population live in poverty have identified that this is equivalent to 14million people¹

LEVEL UP

White paper on how the government plan to reduce inequalities and improve living standards⁴

HEALTH IS WORSE

in populations that are in poverty compared to those not in poverty²

FOOD INSECURITY

7.2million people in UK were experiencing food poverty⁵

GATESHEAD

Est. 188,395 living in poverty with 38,820 suffering from a comorbidity³

FUEL POVETY

Northeast has 131,122 (10.9%) households in fuel poverty, Gateshead has 91,164 household with 9.315 in fuel poverty (10.2%)⁶

Background to evaluation

- Development of Warm Spaces in Gateshead was a **direct response to the ongoing cost of living crisis** and the health risks associated with cold weather during the winter of 2023-2024
- **Evidence supporting the effectiveness of Warm Spaces**, particularly in improving health outcomes and reducing social inequalities, **remains limited**
- Gateshead's Warm Spaces Charter emphasises inclusivity, dignity, and safety = **Spaces that are welcoming and non-judgmental for all**
- However, questions remain about how effectively these principles are being implemented across all spaces and for whom.

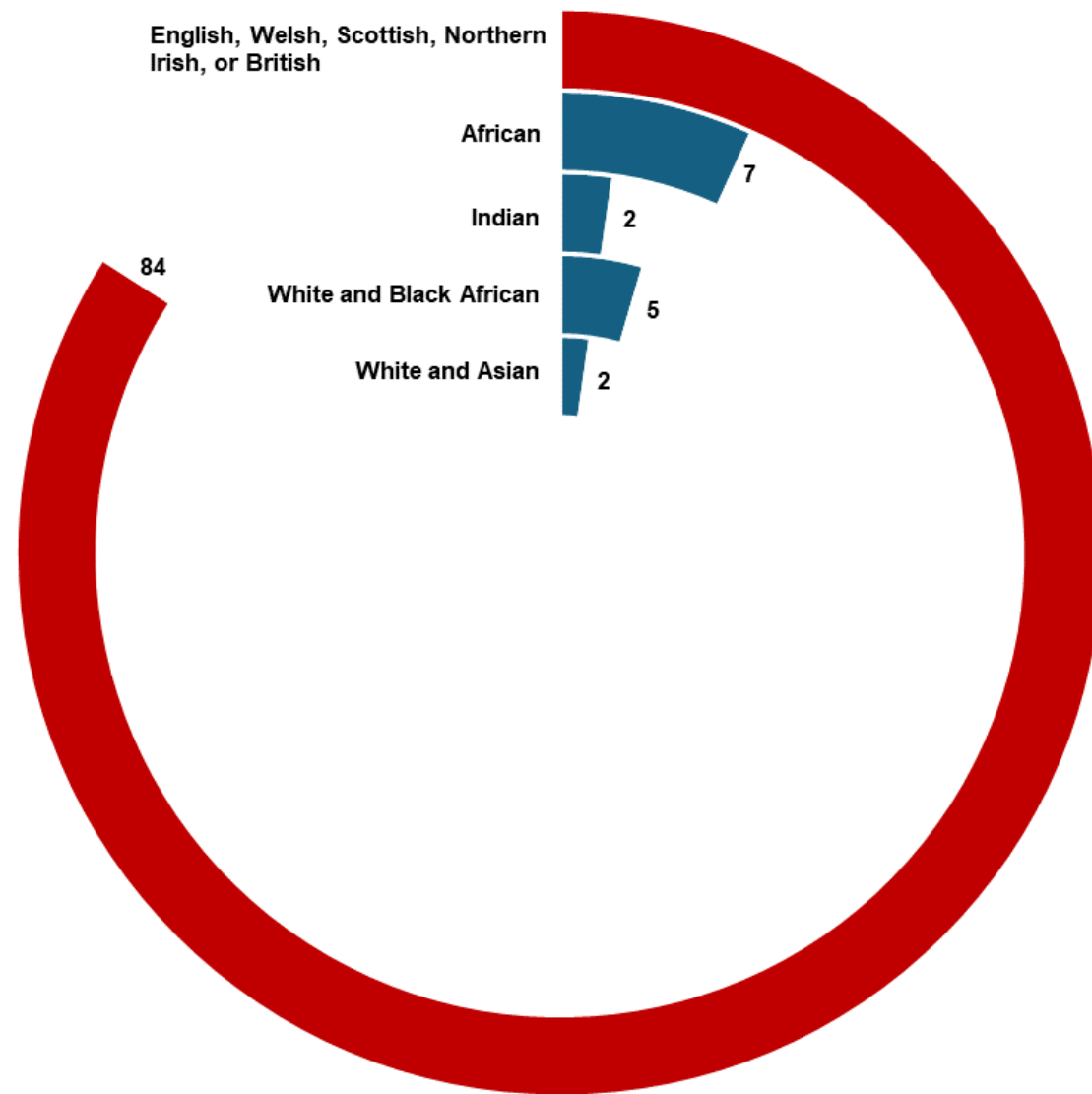
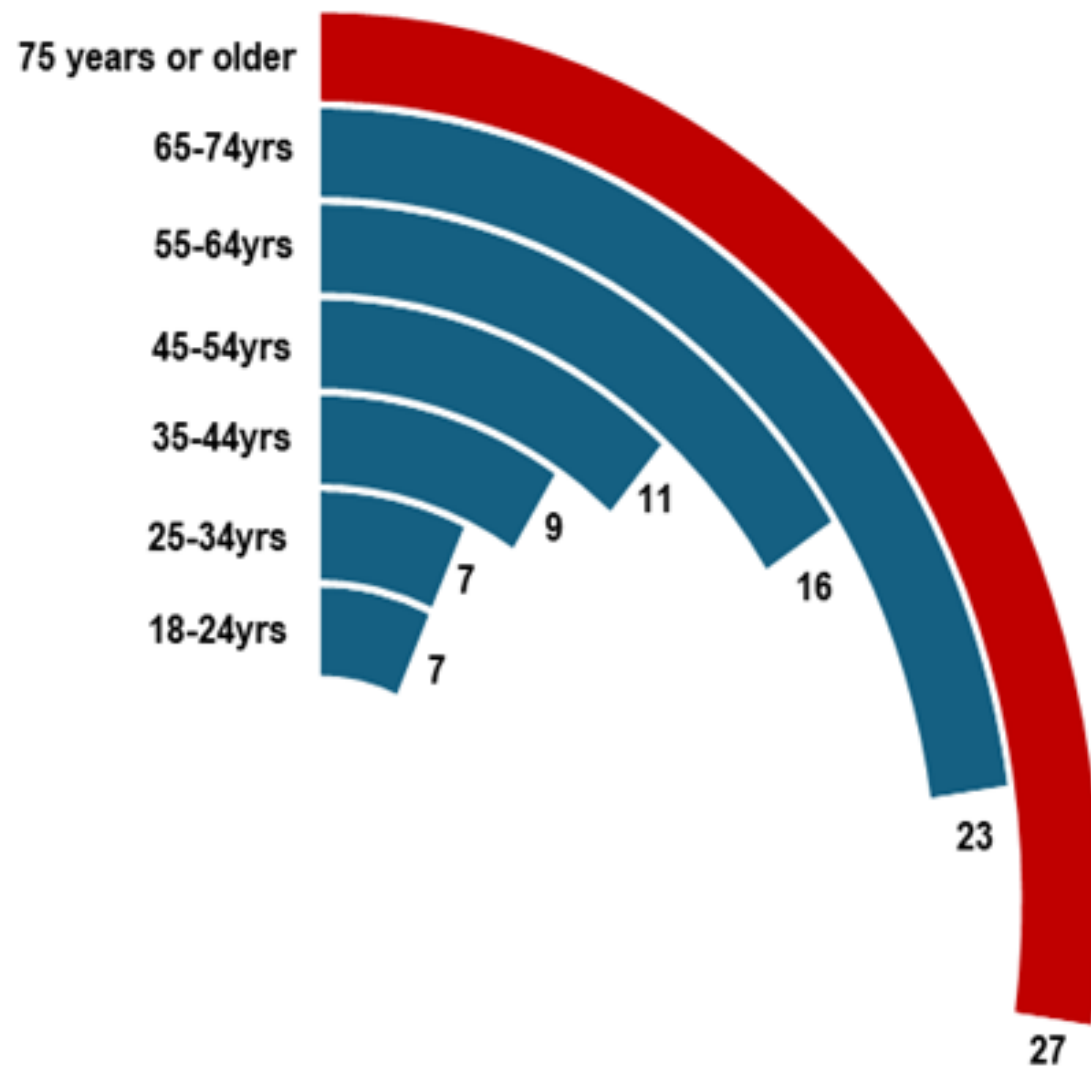
Methodology

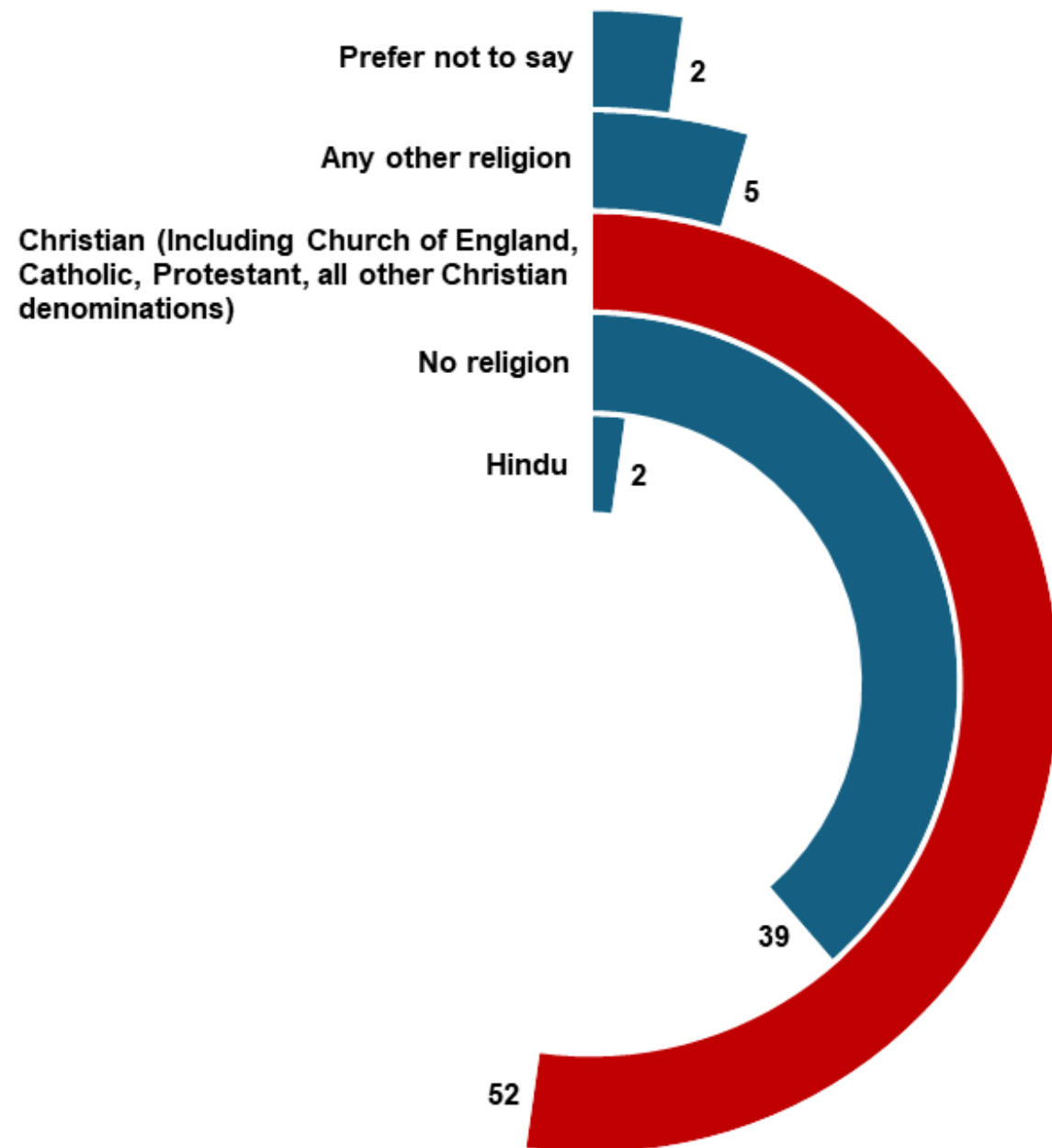
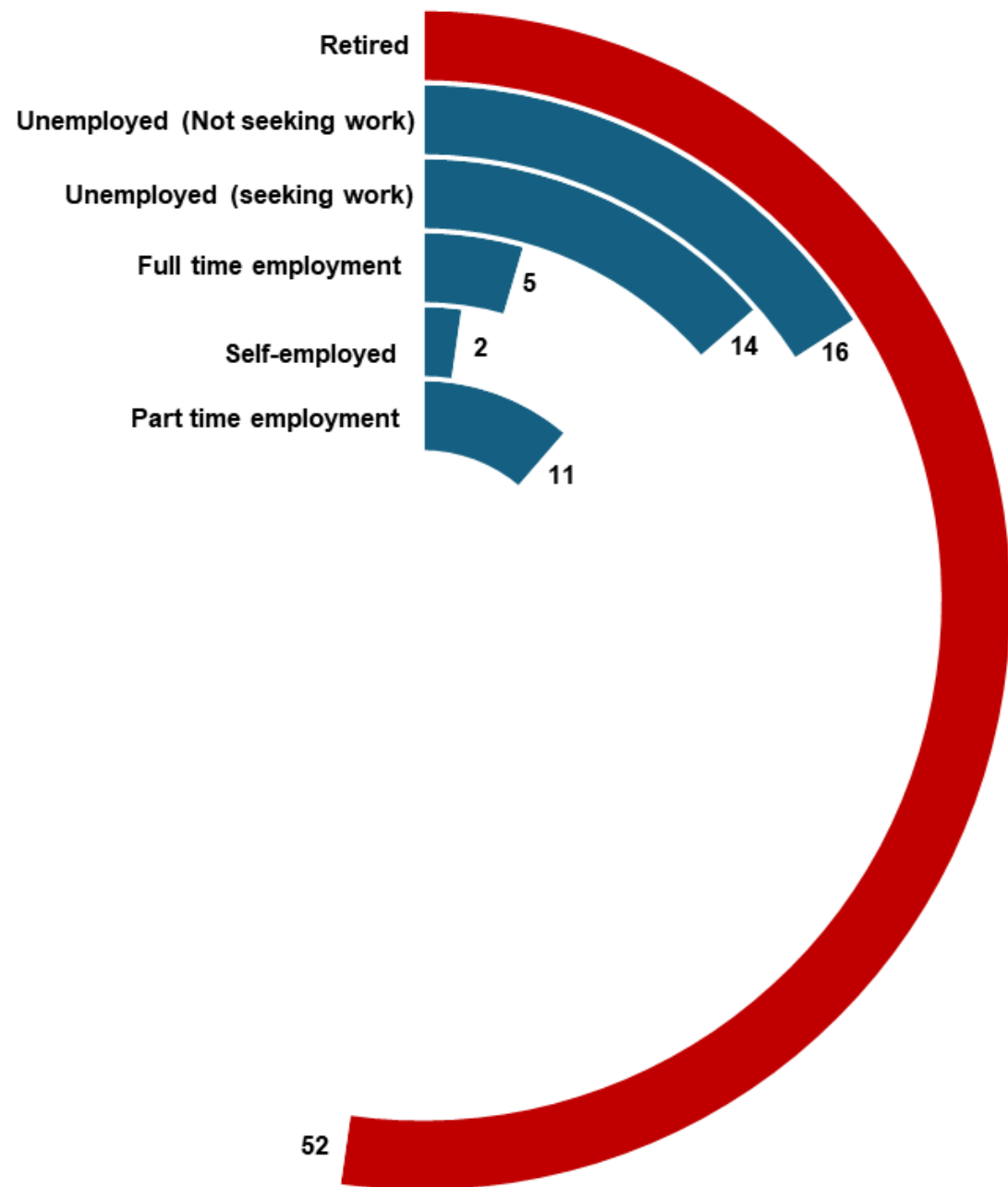
- Mixed method approach was used for this evaluation
- Five focus Groups with a total of 44 residents using Warm Spaces between July – October 2023
- Recruitment consisted of purposive sampling
- 5 focus groups completed (each between 45-55mins)
- Thematic analysis conducted with research team leading to themes and codes produced for analysis

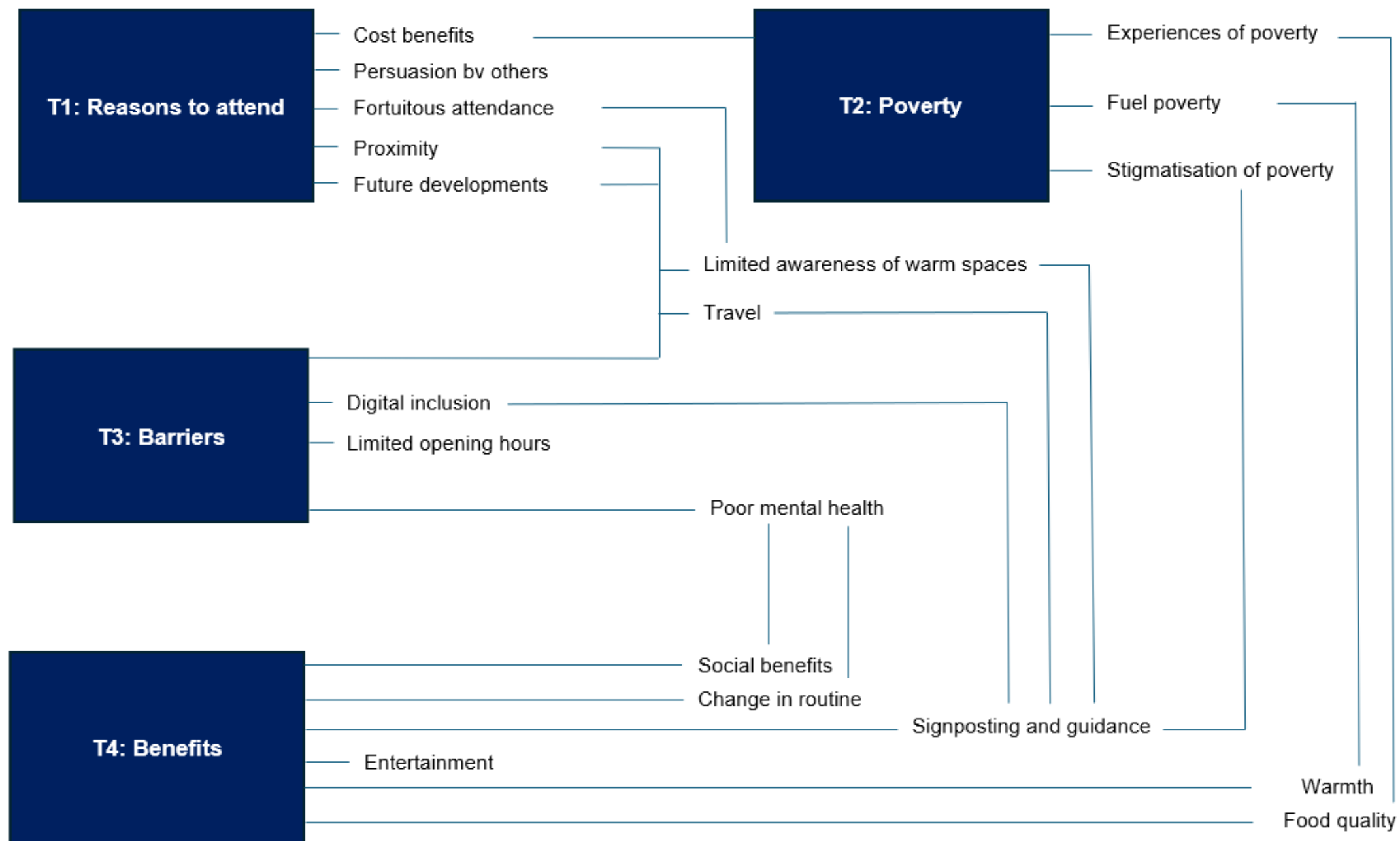


Who do you think uses Warm Spaces (i.e. types of population)

① Start presenting to display the poll results on this slide.



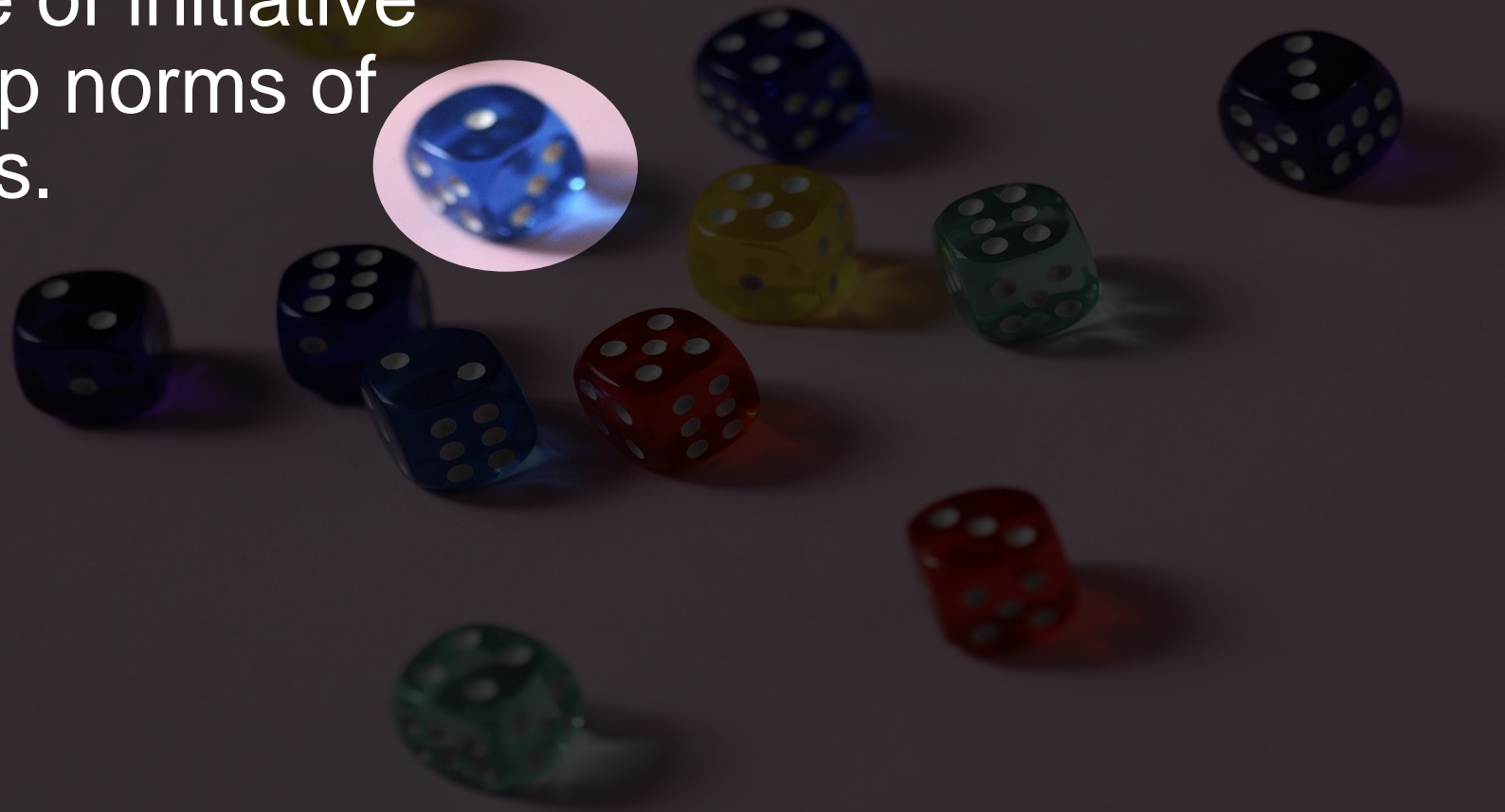






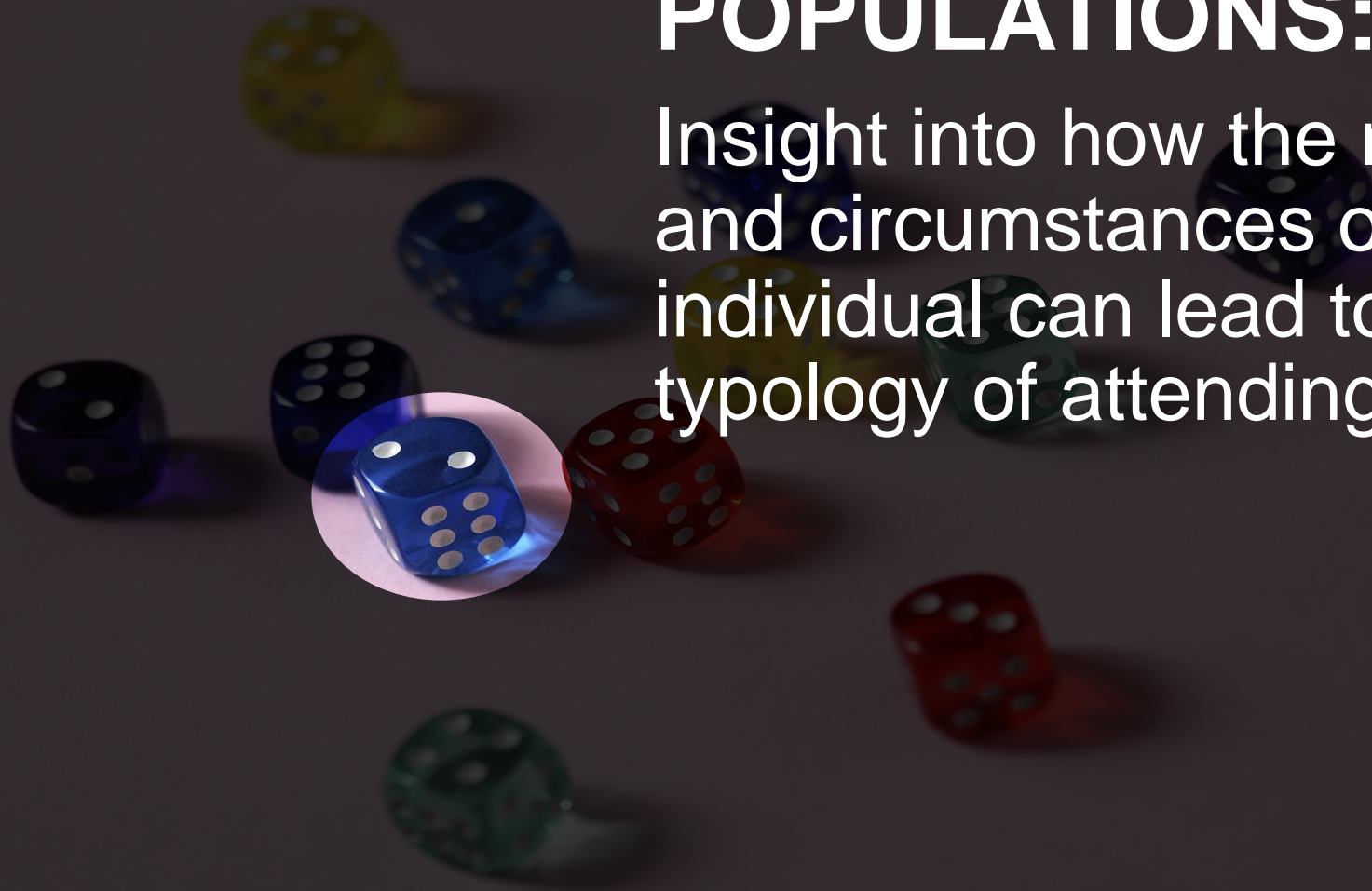
STIGMATISATION:

Comes in the form of
the name of initiative
and group norms of
attendees.



WARM SPACES POPULATIONS:

Insight into how the motivations and circumstances of an individual can lead to a typology of attending.



INFORMAL SUPPORT NETWORK:

A place to obtain help, social
and connect with others.





FOOD AND ENTERTAINMENT:

Motivating factors linked to individuals attending their preferred Warm Space venue.



POVETY CIRCUMTANCES:

The initiative is preventing deteriorating but not addressing the issues associated with poverty.



- Social and mental health impact
- Community support networks and wider benefits
- Community hubs and food perceptions
- Additional benefits and utility savings

Insights: Working well

Insights: Areas for challenge

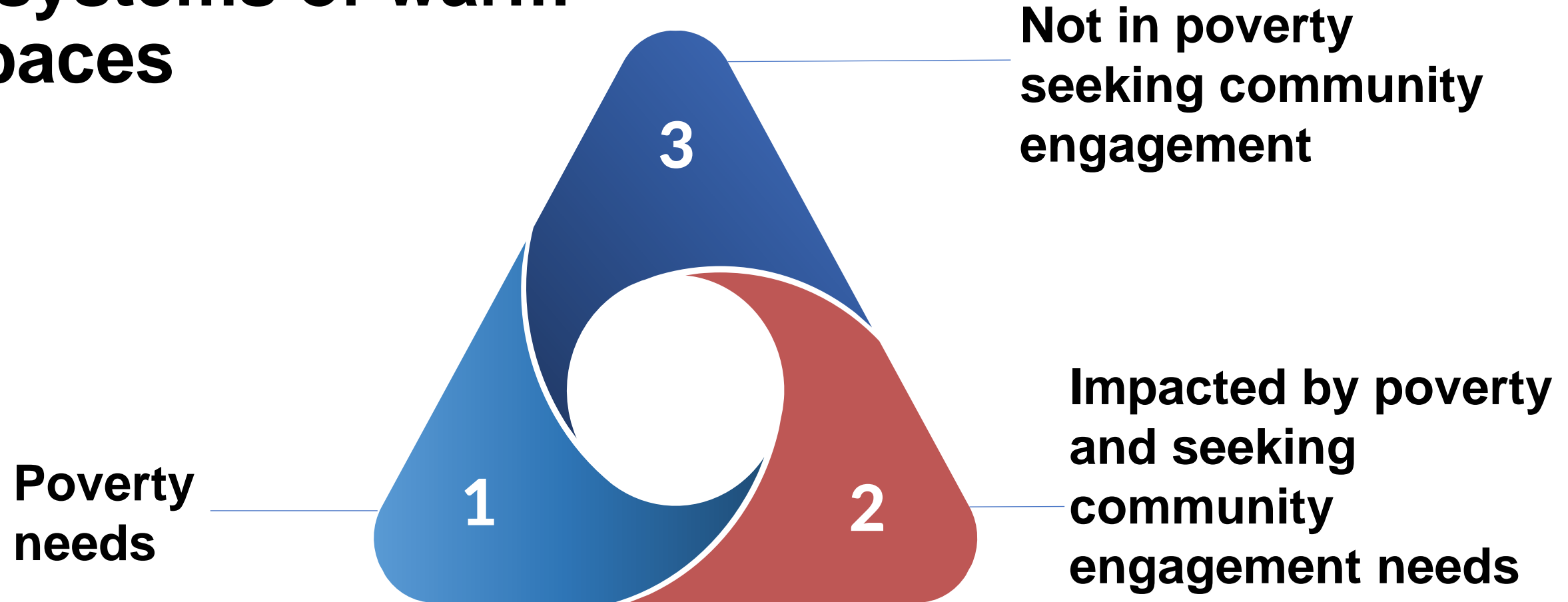
- Mobilisation issues
- Mental health barriers
- Cost of living crisis and poverty
- Comfort zones
- Stigmatisation



This [*warm space site*] is the best. We've got no junkies and that's what puts a lot of people off [*going to warm spaces*], by going to them as much as they need them. It's the fact you can go, and someone could be sat in the corner gouging, and they are going there with their families, little children and stuff like that. Yes, everyone is entitled to stay warm but at least put them [drug users] into one room if you know what I mean. They're only going to sleep in bloody corner.

(Participant)

3 systems of warm spaces



Future recommendations



1 2 3

**Rename
initiative**

**Community
engagement**

**Map
provision**



How will you use the recommendations in your role to challenge Warm Spaces in your region?

① Start presenting to display the poll results on this slide.

Conclusion

- Warm Spaces are highly value by those who use them and supported by well-intentioned volunteers
- Warm Spaces are combating isolation and providing support and improving overall mental wellbeing
- Impact in terms of fuel poverty is minimal and the physical health concerns remain
- Focus needs to be on the wider structural causes of poverty